

October, 1956 – The newly lengthened East/West runway at Pontiac Municipal Airport is dedicated. The runway is lengthened from 2,500 feet to 4,000 feet.

Nov. 1, 1958 – Elwood R. Quesada took the oath as FAA's first Administrator as President Dwight D. Eisenhower looks on. The inauguration takes place after the passage of the Federal Aviation Act in 1958, which created the Federal Aviation Agency. A severe midair collision over the Grand Canyon in 1956 helped to underscore the necessity of an agency such as the FAA.



(FAA)

September 1958 – A notable project that the FAA inherited from the CAA was establishment of a second major airport to serve Washington, D.C. Construction with architect Eero Saarinen provided a prize-winning design for the terminal complex.



(FAA)

1960 – The original terminal, restaurant and control tower are constructed at Pontiac Municipal Airport.



(Daily Oakland Press)

1967 – The City of Pontiac trades the airport to Oakland County in exchange for the Old Masonic Temple building in downtown Pontiac.

# Airport

*(Continued from page 9)*

1950s all through the 60s and 70s and continuing today, that growth, progress and safety have been the watch words for Oakland County International Airport. With these foundations for operation, the utility and usefulness have been increased as evidenced by the numerous businesses located at the airport.

This, sadly, has not been the case with all enterprises. Various commercial enterprises have provided flight operations out of the airport, but not always on too successful a level.

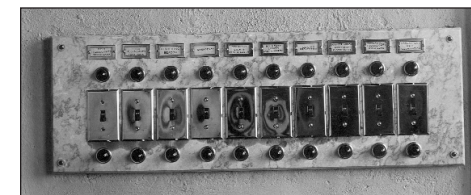
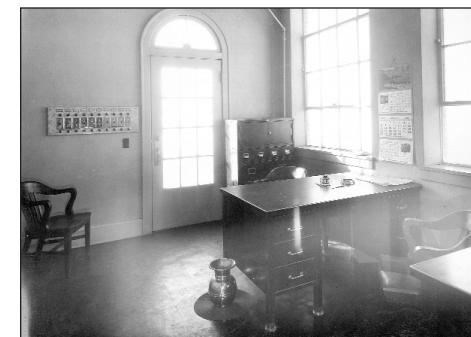
The late 1950s saw North Central Airlines flying in and out of the airport on a daily basis. Standard Airways started flying out of the airport on a regular schedule shortly after North Central Airlines dropped its service in

*(Please see Airport, page 11)*



A pilot checking in at the counter of the Pontiac Municipal Airport. (OCIA)

Below: The Airport Manager's office. Note the spittoon next to the desk. (OCIA)



Above: This panel, located in an office adjoining the hangar, which controlled all of the airport's lighting – unheard of in 1928. (OCIA)



6650 HIGHLAND RD. STE 211  
WATERFORD, MI  
IN THE AIRPORT COMMERCE CENTER

CHANGE IS INEVITABLE, BUT NOT ALWAYS EASY. MY NAME IS GREGORY HOPSON. I AM THE NEW OWNER OF AMERICAN SPEEDY PRINTING OF WATERFORD. COME IN AND SEE THE CHANGES I HAVE MADE. I AM STRIVING TO SERVE YOU BETTER.

**15% OFF**

YOUR IN HOUSE PRINTING ORDER.  
OFFER GOOD THROUGH COT 31ST.  
WITH COUPON NOT VALID WITH  
ANY OTHER OFFER.