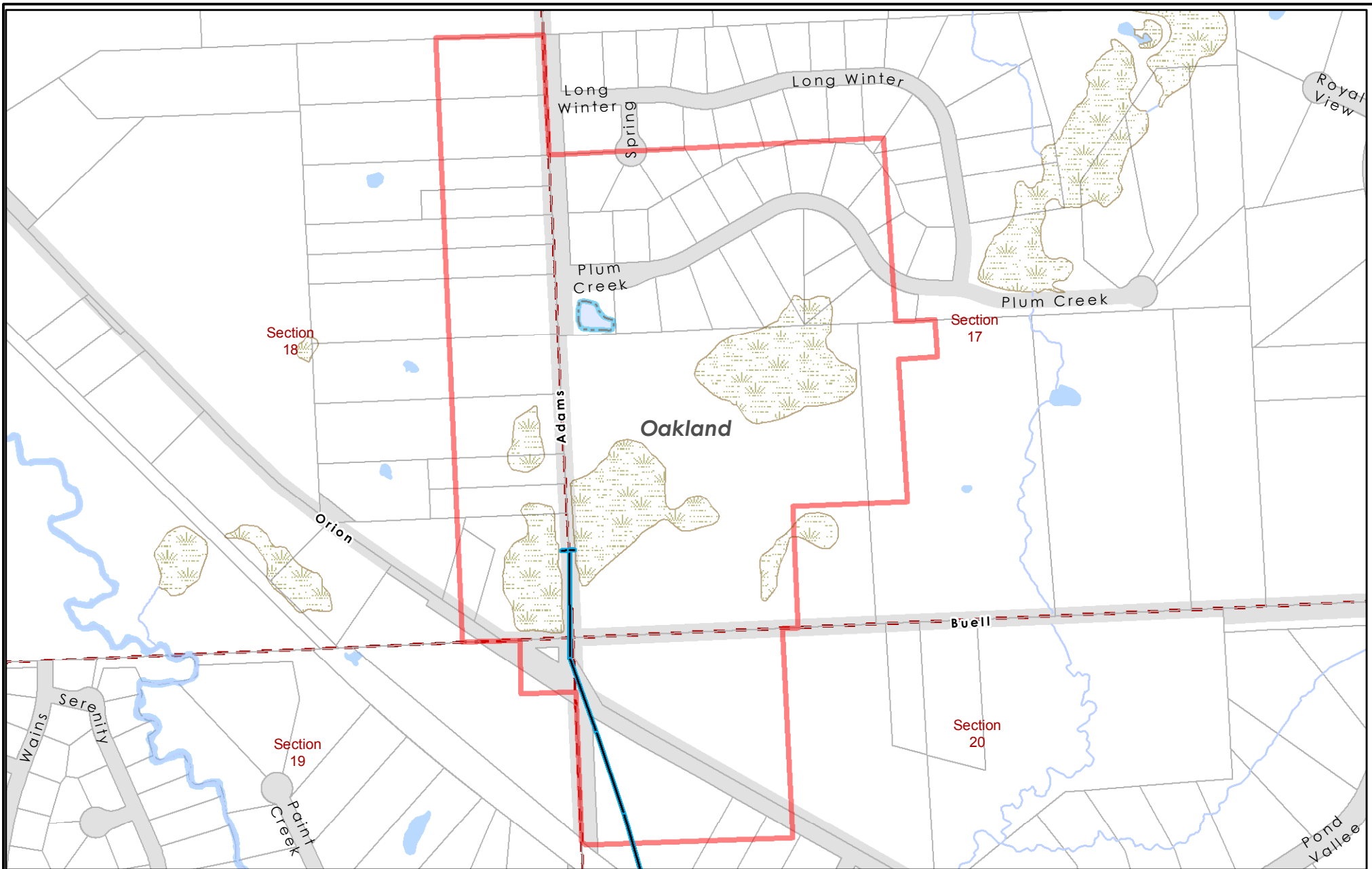


Five Points County Drain

The Five Points Drain was established in 1922. The Drain has its outlet at a point located 1006 feet south and 264 feet east of the N.W. corner of section 20. From its outlet, the drain extends northwesterly to the west line of section 20, 916 feet northwest of its outlet; thence running north along the west section line of section 20 and continuing north between sections 17 and 18 to its upper terminus at a point 445 feet north of the S.W. corner of section 17. The drain was originally constructed was 10 inch and 6 inch diameter tile. In 1925, the drain was improved and the tile size was increased to 12 inch diameter. The drain has a total length of 1500 feet. The Drain collects runoff from 94 acres. A map indicating the drainage district and the location of the drain is available below.



Legend	
Lower Terminus	Channel
Storm Pipe / Culvert	Spillway
Private / Maintained by Others	Stream / River
NON WRC Culvert	Swamp / Marsh
Siphon	Drain Detention / Retention Pond
Force Main	Lake / Pond or Stream / River / Channel
Private / Maintained by Others	Assessment District
	Tax Parcel
	Section Lines
	Municipal District

FIVE POINTS DRAIN DRAIN ASSESSMENT DISTRICT OAKLAND TOWNSHIP



WRC
 WATER RESOURCES COMMISSIONER
John P. McCulloch

Disclaimer: The information provided in this system has been compiled from recorded deeds, plats, tax maps, surveys and other public records and data. It is not a legally recorded map or survey and is not intended to be used as one. Users of this data are hereby notified that the information sources mentioned above should be consulted for verification of the information.